

Jim Slaughter
805-962-6700 x 107
jslaughter@lee-associates.com
license number: 859033

Keith Simon
805-782-9000 x 20
ksimon@lee-associates.com
license number: 1491442

Jason Hart
805-782-9000 x 21
jhart@lee-associates.com
license number: 1334694



REGIONAL MALL SPACE FOR LEASE

Santa Maria Town Center
Santa Maria, CA



Santa Maria Town Shopping Center, located on the SE corner of South Broadway and East Main Street. Approximately 1 mile from Highway 101 is a 600,000 sq. ft. mall anchored by *Macy's* and *Sears* that serves a trade area of nearly 350,000 people. It is the only enclosed mall between Ventura and Monterey. A new 14-screen *Regal Cinema* theater will begin construction soon in place of former *Gottschalks*. Other tenants include *Red Robin*, *Bath & Body Works*, *Payless Shoes*, *Footlocker*, *Lenscrafters*, *Kay Jewelers*, *Champ Sports*, *PacSun*, *GNC*, and many more!

Location: SEC of E. Main Street & S. Broadway
(Adjacent to the city center with City Hall,
Police Station and Library)

Available Spaces: 500-20,000 Square Feet

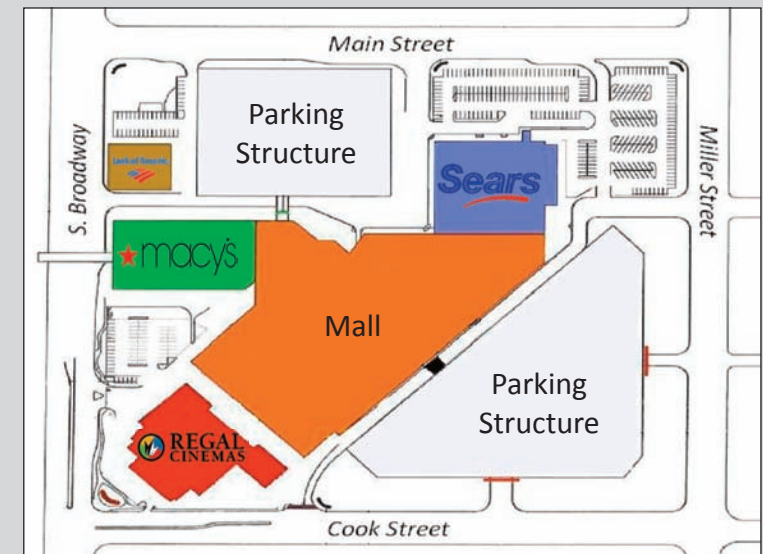
Lease Rate: Negotiable, Call Agent

Property Type: Enclosed Mall

Zoning: Downtown Specific Plan

Parking: City Parking Structures

Available: Now



Jim Slaughter
805-962-6700 x 107
jslaughter@lee-associates.com
license number: 859033

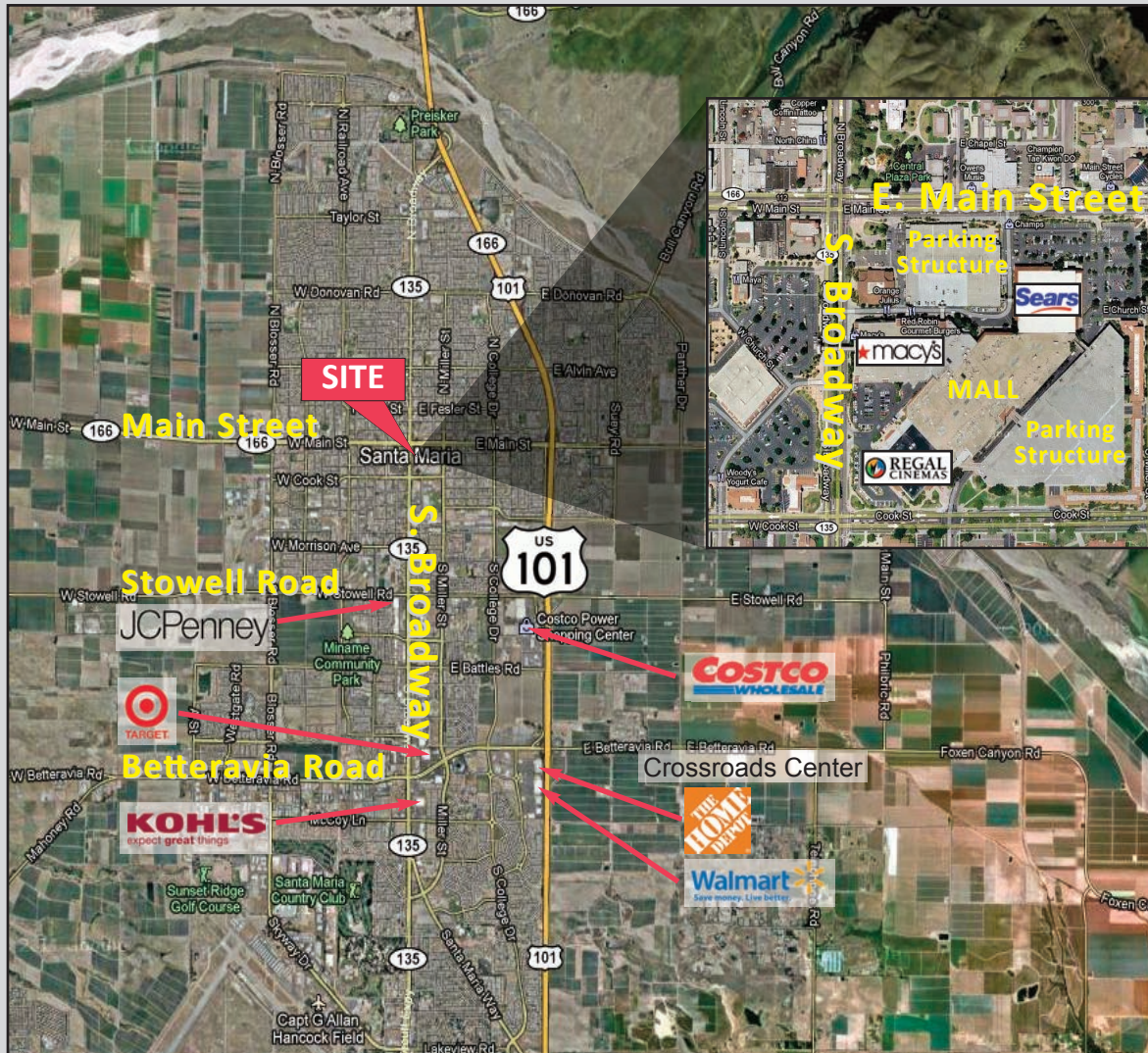
Keith Simon
805-782-9000 x 20
ksimon@lee-associates.com
license number: 1491442

Jason Hart
805-782-9000 x 21
jhart@lee-associates.com
license number: 1334694



REGIONAL MALL SPACE FOR LEASE

Santa Maria Town Center
Santa Maria, CA



The Santa Maria Valley is located 170 miles north of Los Angeles and 270 miles south of San Francisco at the intersection of California State Highway 101 and Highway 166 in northern Santa Barbara County.

The city of Santa Maria's population of 100,000 makes it the largest city in Santa Barbara County. The customer base of 346,000 in the trade area also includes the area of Vandenberg Air Force Base, Lompoc, Santa Ynez Valley, Orcutt, Nipomo, Arroyo Grande, Grover Beach, Pismo Beach and parts of San Luis Obispo.

Radius Demographics (2011 Estimates)

	5-Mile	10-Mile	30-Mile
Population	105,808	153,279	346,536
Number of Households	30,766	46,445	116,731
Average Household Income	\$58,700	\$66,368	\$69,075

Jim Slaughter
 805-962-6700 x 107
 jslaughter@lee-associates.com
 license number: 859033

Keith Simon
 805-782-9000 x 20
 ksimon@lee-associates.com
 license number: 1491442

Jason Hart
 805-782-9000 x 21
 jhart@lee-associates.com
 license number: 1334694



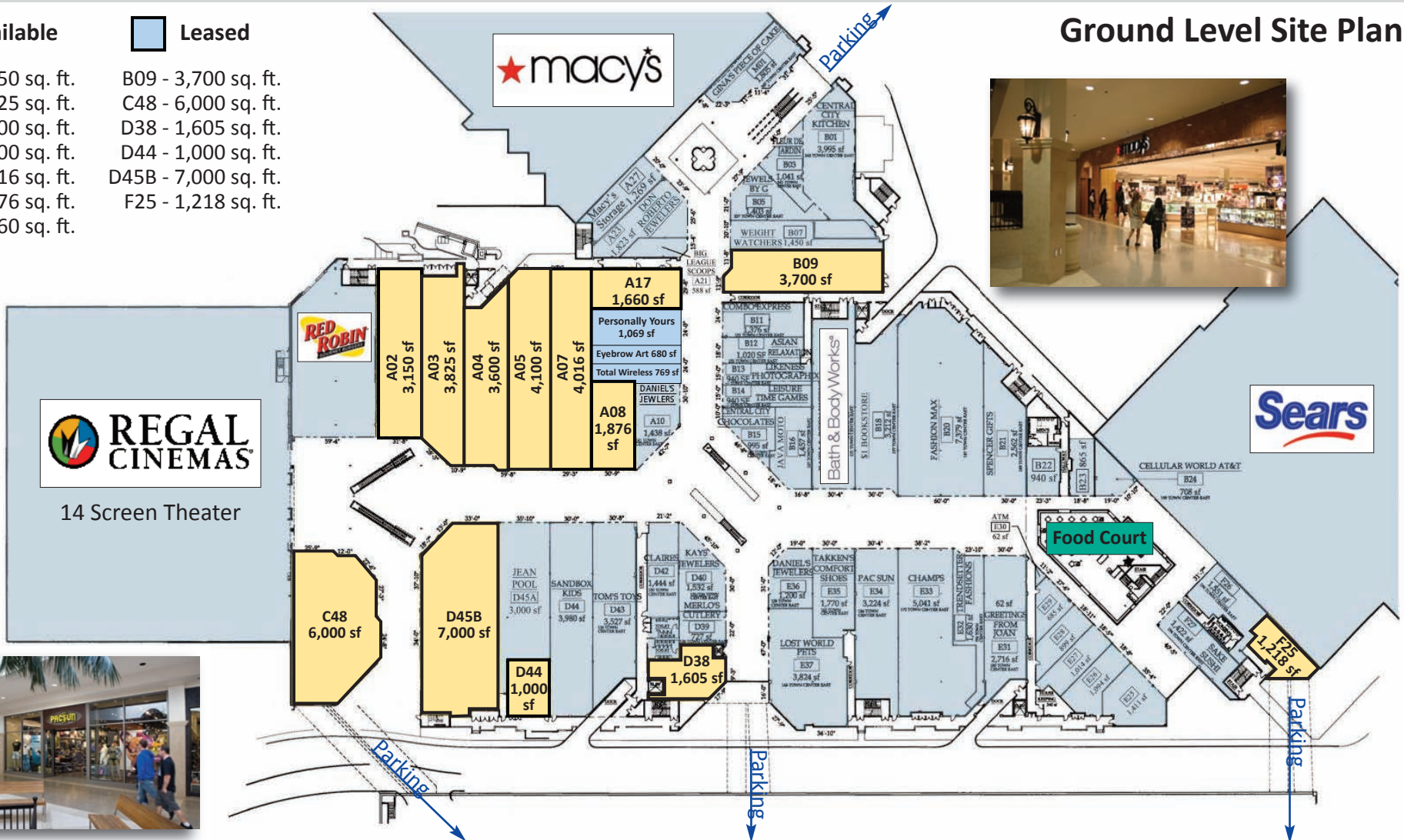
REGIONAL MALL SPACE FOR LEASE

Santa Maria Town Center
 Santa Maria, CA

Available Leased

- | | |
|---------------------|----------------------|
| A02 - 3,150 sq. ft. | B09 - 3,700 sq. ft. |
| A03 - 3,825 sq. ft. | C48 - 6,000 sq. ft. |
| A04 - 3,600 sq. ft. | D38 - 1,605 sq. ft. |
| A05 - 4,100 sq. ft. | D44 - 1,000 sq. ft. |
| A07 - 4,016 sq. ft. | D45B - 7,000 sq. ft. |
| A08 - 1,876 sq. ft. | F25 - 1,218 sq. ft. |
| A17 - 1,660 sq. ft. | |

Ground Level Site Plan



Jim Slaughter
 805-962-6700 x 107
 jslaughter@lee-associates.com
 license number: 859033

Keith Simon
 805-782-9000 x 20
 ksimon@lee-associates.com
 license number: 1491442

Jason Hart
 805-782-9000 x 21
 jhart@lee-associates.com
 license number: 1334694



REGIONAL MALL SPACE FOR LEASE

Santa Maria Town Center
 Santa Maria, CA

Available Leased

G69 - 944 sq. ft.
 H49 - 2,400 sq. ft.
 J88 - 2,750 sq. ft.
 K78 - 1,097 sq. ft.

Upper Level Site Plan

